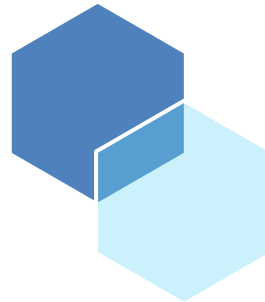

Integrating AI into Your Writing: *Risks, Blind Spots, and Practice*

Freddy Yi-Chi Chen
Academic Writing Education Center, NTU
2026/03/27



X



About the Instructor

Education Background

- M.A. in Linguistics, Newcastle University

Pedagogical Focus & Research Interest

- English Technical Writing and Communication 科技英文寫作與表達

- English Writing for Academic Purposes 學術英文論文寫作與發表

EMI - Fundamentals of English Writing 英文寫作基礎

EMI - Academic English for Bioresources and Agriculture 學術英文：生農領域

- AI-powered English Writing Application and Advancement AI輔助英文應用寫作

EMI - English Poster Presentation for Academic Purposes 學術簡報口語訓練

- Research Storytelling: 3MT Presentation 3分鐘學術英語簡報

**Let's begin with a post,
or the story behind it...**



Pan Pan

22 February · 🌐

三份 2025 年研究透過分析數以百萬篇論文與 PubMed 文獻證實，自 ChatGPT 釋出後，學術論文詞彙發生了斷崖式改變。至少 13.5% 的摘要顯示受 AI 影響，特定風格詞如「delve」、「meticulous」、「underscore」頻率爆增數十倍。且理工科 (STEM) 領域的詞彙成長幅度遠高於人文社科，非英語母語地區使用比例尤高。

💡 先總結這論文：

1. 許多用詞成了 AI 身份證：如果在論文摘要中看到 "delve into the intricate interplay..." 這樣的句子，現代算法幾乎可以 90% 斷定這是 AI 生成的。
2. AI 的寫作偏好：AI 傾向於使用「華麗且充滿修飾性」的動詞與形容詞 (如 intricate, meticulous, pivotal)，這些詞在人類自然寫作中反而較少同時高頻率出現。
3. 非英語背景者的利器：雖然 AI 幫助了非英語母語者改進文筆，但也導致了學術語言的「同質化」——大家寫出來的東西越來越像同一個機器人寫的。

研究人員在審視這些因 AI 而異常暴增的詞彙時，會將它們區分為「內容詞 (content words)」(例如：SARS、卷積網路等與研究實質內容直接相關的名詞) 以及「風格詞 (style words)」(例如：intricate、notably 等影響語氣的修飾詞)。

數據顯示，ChatGPT 推出後激增的詞彙幾乎全是風格詞，其中高達 66% 是動詞，14% 是形容詞。AI 在寫作時最大的問題在於把科學術語當作「華麗的隱喻 (Metaphor)」來濫用。例如，LLM 會寫出 "catalyze a paradigm shift" (催化典範轉移)，或是像 "enzymatic labyrinth" (酵素迷宮)、"intricate web" (錯綜複雜的網) 這類過度戲劇化的句子。

原文：



潘人豪 (Pan Pan, Founder of WeCare) 的文章網址：

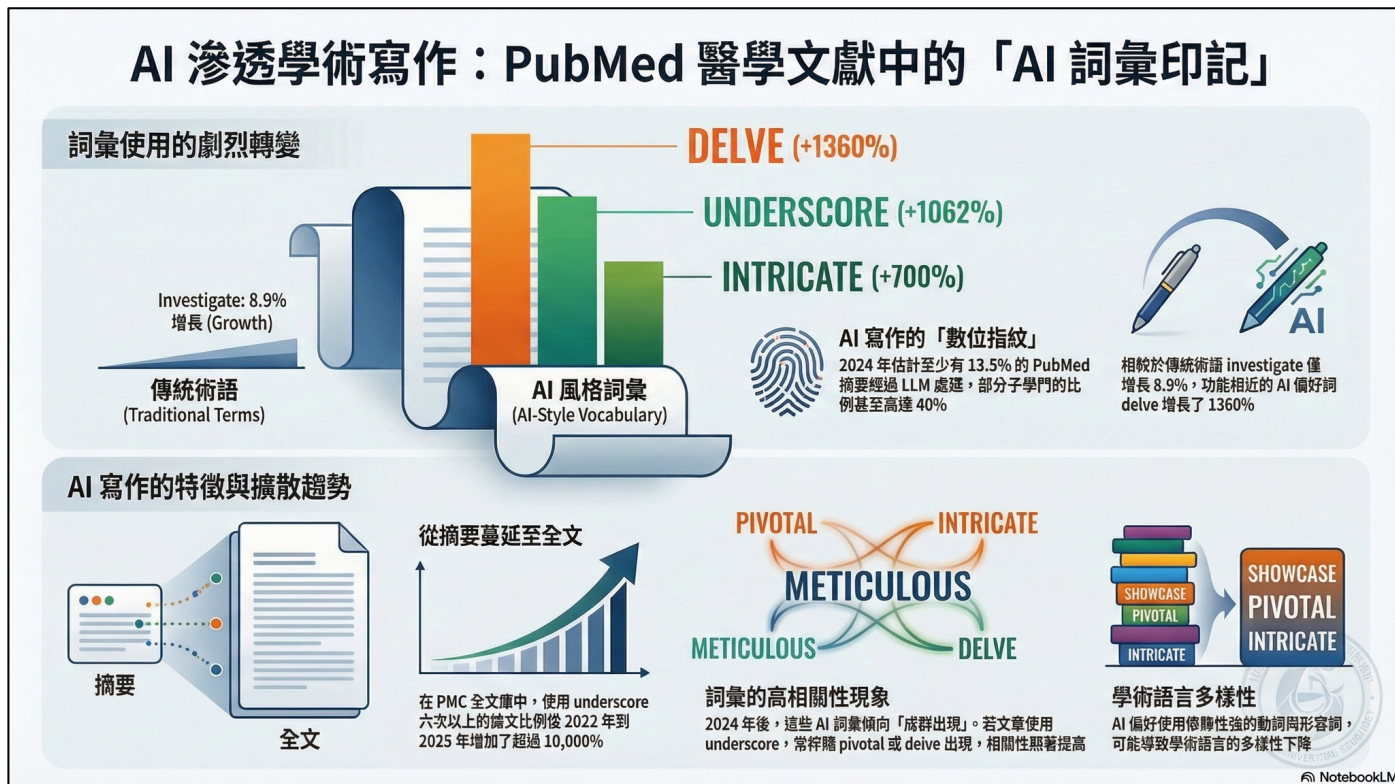
<https://www.facebook.com/bphouse.tw/posts/pfbid0t9tN8ufZs8Y81Z8V9PVG7EGXfFbvgedaMaX2yAneU93EoxsRoC3fNvywXmr97u1sl>
Matsui K. **Delving Into PubMed Records: How AI-Influenced Vocabulary has Transformed Medical Writing since ChatGPT.** *Perspect Med Educ.* 2025;14(1). doi:10.5334/pme.1929.

Um?



AWL (1998) by
Averil Coxhead

And then an infographic chart... (Scan the QR Code for the full text)



原文：



潘人豪 (Pan Pan, Founder of WeCare) 的文章網址：

<https://www.facebook.com/bphouse.tw/posts/pfbid0t9tN8ufZs8Y81Z8V9PVG7EGXfFbvgedaMaX2yAneU93EoxsRoC3fNvywXmr97u1sl>
Matsui K. **Delving Into PubMed Records: How AI-Influenced Vocabulary has Transformed Medical Writing since ChatGPT.** Perspect Med Educ. 2025;14(1). doi:10.5334/pme.1929.

And another chart... (Scan the QR Code for the full text)

AI 的「聲音」是什麼樣子？

By meticulously delving into the intricate web connecting these factors, this comprehensive chapter takes a deep dive into their involvement...

- ✓ 過度使用強調詞 (Overuse of emphatic words)
- ✓ 華麗但空洞的連接詞 (Flowery but empty transitions)
- ✓ 結構高度標準化 (Highly standardized structure)

NotebookLM

原文：



潘人豪 (Pan Pan, Founder of WeCare) 的文章網址：

<https://www.facebook.com/bphouse.tw/posts/pfbid0t9tN8ufZs8Y81Z8V9PVG7EGXfFbvgedaMaX2yAneU93EoxsRoC3fNvywXmr97u1sl>
Matsui K. **Delving Into PubMed Records: How AI-Influenced Vocabulary has Transformed Medical Writing since ChatGPT.** *Perspect Med Educ.* 2025;14(1). doi:10.5334/pme.1929.

Questions collected in advance...

1. 想了解如何檢核AI翻譯錯誤
2. 怎麼精準翻譯，讓AI講人話，或是檢查出用法奇怪的地方？
3. 好奇如何避免 AI 味道的文章，中英文感覺不太相同
4. 寫英文摘要無法確認英文文法對錯
5. 如何克服AI幻覺
6. 用它做翻譯，但用他修改我的草稿，效果很好，想知道學術倫理的風險
7. 學位論文的英文摘要，是否能用AI協助？正確度如何提升及要注意哪些事項？
8. 自己的論文內容會不會成為別人參考的素材？如何保護自己的文稿不會被竊取？
9. 如何與 AI 協作提升人類的寫作靈感與原創性？
10. 以高度文學技法的作品為例，為什麼AI翻譯不出人類譯者「很繞」（可能為了貼近文風）的中文？比如賴明珠（不確定是不是適合的例子）譯者的翻譯既引起爭議卻又在某個時代受到讀書市場歡迎。AI的話可能就是「AI體」，可能不同語言都會「AI體化」。
11. 想請問講師，哪一款AI做英翻中的風格最接近台灣的語言使用習慣
12. 翻譯完不確定是不是最適合某個場合使用的語句用詞和文法，讀起來好像都通順不知道如何修改
13. 我翻譯完看都看不懂，老實說我沒什麼在改

Questions collected in advance...

1. 想了解如何檢核AI翻譯錯誤
2. 怎麼精準翻譯，讓AI講人話，或是檢查出用法奇怪的地方？
3. 好奇如何避免 AI 味道的文章，中英文感覺不太相同
4. 寫英文摘要無法確認英文文法對錯
5. 如何克服AI幻覺
6. 用它做翻譯，但用他修改我的草稿，效果很好，想知道學術倫理的風險
7. 學位論文的英文摘要，是否能用AI協助？正確度如何提升及要注意哪些事項？
8. 自己的論文內容會不會成為別人參考的素材？如何保護自己的文稿不會被竊取？
9. 如何與 AI 協作提升人類的寫作靈感與原創性？
10. 以高度文學技法的作品為例，為什麼AI翻譯不出人類譯者「很繞」（可能為了貼近文風）的中文？比如賴明珠（不確定是不是適合的例子）譯者的翻譯既引起爭議卻又在某個時代受到讀書市場歡迎。AI的話可能就是「AI體」，可能不同語言都會「AI體化」。
11. 想請問講師, 哪一款AI做英翻中的風格最接近台灣的語言使用習慣
12. 翻譯完不確定是不是最適合某個場合使用的語句用詞和文法，讀起來好像都通順不知道如何修改
13. 我翻譯完看都看不懂，老實說我沒什麼在改

AI翻譯與編修表現 (Translation & Editing)

1. 想了解如何檢核AI翻譯錯誤
2. 怎麼翻譯讓AI講人話，或是檢查出用法怪的地方？
12. 翻譯是否符合特定學術場合（語域、語調）
13. 我翻譯完看都看不懂，老實說我沒什麼在改

風格與「AI味」問題 (Style & Voice)

3. 如何避免 AI 味的文章，中英文感覺不太相同
10. 哪一款AI英翻中最接近台灣語感
11. 為什麼AI翻不出「很繞」的文學翻譯（如 賴明珠 的例子），AI是否會造成「AI體化」趨勢

英文學術寫作輔助 (AI-assisted Academic Writing)

4. 寫英文摘要無法確認文法對錯
7. 論文摘要是否能用AI協助？如何提升正確度？
9. 如何與 AI 協作提升人類的寫作靈感與原創性？

風險、倫理與AI素養 (Ethics, Risk & AI Literacy)

5. 如何克服AI幻覺
6. 用AI修改草稿的效果好，探討相關學術倫理風險
8. 論文內容會不會被拿去訓練？如何保護？

TABLE OF CONTENTS

01. Features of Academic Writing Style

Common pitfalls &
Generative AI styles



02. Structures of Formal Research Papers

Parts, moves, and steps
in research papers



03. Abstract Writing

“Textbook” abstracts vs.
“Real World” abstracts



04. Q&A

Recommended models
and materials



01.

Features of Academic Writing Style



Authentic Example 1

Most people experience drug overdoses because they find that it is difficult to sort out their problems clearly. That is why you should treat your patients in a way that helps them to tell the difference between their problems and find ways to deal with them.

Authentic Example 1

Most people experience drug overdoses because they find that it is difficult to sort out their problems clearly. That is why you should treat your patients in a way that helps them to tell the difference between their problems and find ways to deal with them.

✓ *Most people experience drug overdoses because they find it difficult to sort out their problems clearly. This challenge of patients' explains why medical experts should treat their patients in a way that helps them to identify the differences between their problems and find ways to tackle them.*

➤ **Avoid Personal Style***

➤ **This + summary word/phrase (e.g. This xxx ...)**

➤ **Formal Wording Style (see *iAcademic Word List* by Coxhead, 1998)**

Authentic Example 2

Could a policy intervention help counteract some of the adverse impacts of the pandemic? In order to examine this question, we implemented a randomized intervention halfway through this period. Building on our findings and on prior work on the link between physical activity and mental health, in June 2020 we randomized half of our participants to receive incentives for walking at least 10,000 steps per day for two weeks.

Authentic Example 2

Could a policy intervention help counteract some of the adverse impacts of the pandemic? In order to examine this question, we implemented a randomized intervention halfway through this period. Building on our findings and on prior work on the link between physical activity and mental health, in June 2020 we randomized half of our participants to receive incentives for walking at least 10,000 steps per day for two weeks.

- ✓ *To examine whether a policy intervention could help counteract some of the adverse impacts of the pandemic, we ...*
- ✓ *Based on our findings... , in June 2020 half of the participants were randomized to receive incentives...*
- **Be concise**
- **Avoid direct questions**
- **Use Passive Voice as needed (focus on the patient of the verbs)**
- **Consider the use of first-person pronouns**

Indirect Questions

Noun Clauses

Led by

that

To make a nominalized statement

Does anyone here know **that** the subject has not smoked for over two months?

Whether/If

To form a polar, binary question

It remains inconclusive **whether/if** the average non-smoking period will surpass three months.

WH- words

To raise an open-ended question

Research interest has been drawn to **how** difficult quitting smoking is for the participants.

Practice

1. The government didn't allocate much funding for the program.

- Use formal negative; avoid contraction

2. The analysis didn't yield any new results.

- Use formal negative; avoid contraction

3. You can see the results in Table 1.

- Use impersonal writing style

4. Can machine learning be used to measure the acetic acid concentration directly?

- Use indirect question

5. The results indicated that employing this method in the structure increased the natural period and reduced the seismic response of the structure to a considerable extent.

- Clear Adverb placement; Single Adverb (Conciseness)

Key

1. The government **allocated little** funding for the program.
2. The analysis **yielded no** new results.
3. **The results can be seen** in Table 1.
4. **whether** machine learning can be used to measure the acetic acid concentration directly (n. clause)
 - This paper aims to investigate **whether** machine learning can be used to measure the acetic acid concentration directly.
 - **Whether** machine learning can be used to measure the acetic acid concentration directly remains inconclusive.
5. The results indicated that employing this method in the structure **considerably** increased the natural period and reduced the seismic response of the structure.

“I Can Spot AI Writing Instantly - Bypass ChatGPT Detectors for FREE”



Rhythm

Lack of Variation

Em dash (—)

No hesitation or nuance

Surface-level Depth

No Hedging

Rule of Three

No Tangents

Lengthy Sentence

Humor has been **conceptualized through three major theories—Superiority, Relief, and Incongruity—each providing a distinct account of its nature and function.** Superiority Theory, associated with Plato, Aristotle, and later Thomas Hobbes, **defines humor as a response grounded in perceived superiority over others,** whereas Relief Theory, linked to Sigmund Freud, **defines humor as the release of psychological tension,** and Incongruity Theory, drawing on Immanuel Kant, **defines humor as the perception of incongruity between expectation and outcome.** Together, these theories establish a coherent and widely recognized framework for the study of humor in academic research.

Rhythm

Lack of Variation

Em dash (—)

No hesitation or nuance

Surface-level Depth

No Hedging

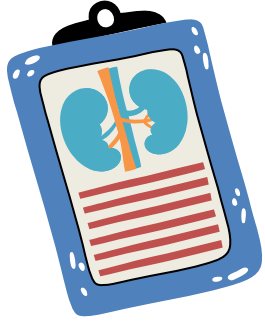
Rule of Three

No Tangents

Lengthy Sentence

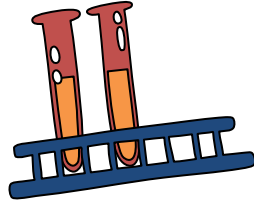
Features of Academic Writing Style

1. **NO** Contraction (e.g., it's)
2. Clear Adverb Placement
3. Conciseness
4. Indirect Questions
5. Formal negative expressions
6. Impersonal Style
7. Limited vague expressions (e.g., etc.)
8. Old-to-new Information Flow

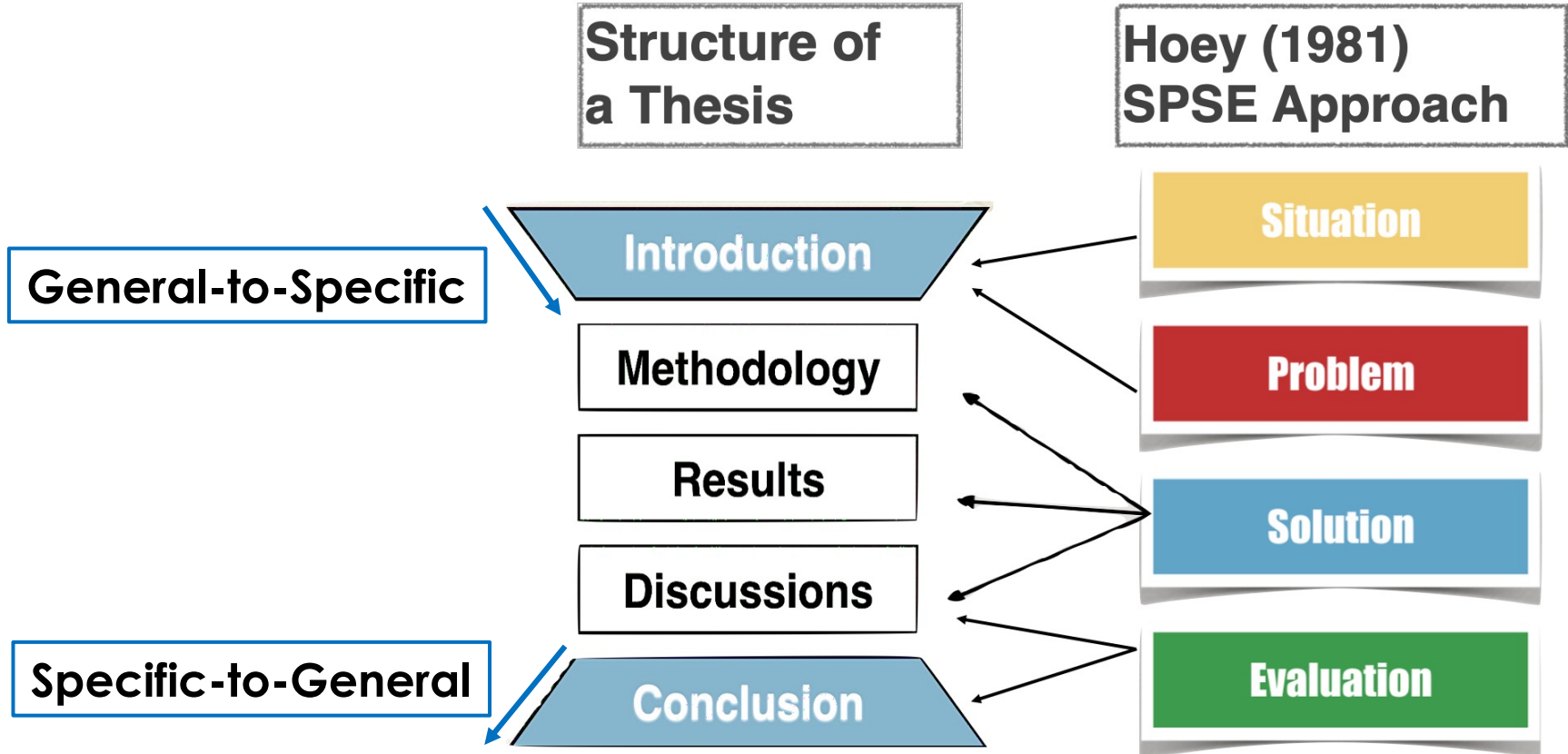


02.

Structures of Formal Research Papers

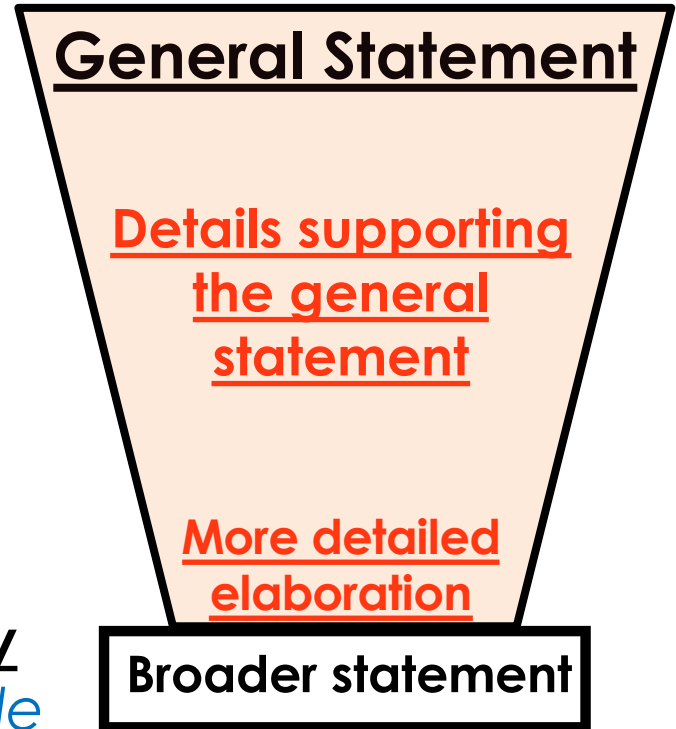


Structures of Formal Research Papers



Shape of a General-Specific Text

- Common understanding
 - *present tense*
- Other possible definitions
 - *present perfect or past simple*
- The definition in the present study
 - *present perfect or present simple*



THREE Ways of Opening a Text

General Observation, Scientific Fact, or Definition?

Example 1 – English language

- a. English is the first language of approximately 1.7 billion people.
- b. English is a language belonging to the West Germanic subgroup of the Indo-European language family.
- c. English has found favor in many parents' eyes in the Asian community.

Example 2 – COVID-19

- a. Coronavirus disease 2019 (COVID-19) is an infectious disease caused by severe acute respiratory syndrome coronavirus 2 (SARS-CoV-2).
- b. COVID-19 was first identified in 2019 in Wuhan, and has since spread globally, resulting in the 2019–20 coronavirus pandemic.
- c. Since the outbreak of COVID-19, the “Western” aversion to and the Asian predilection for mask-wearing has been a recurring theme in the news.

THREE Ways of Opening a Text

General Observation, Scientific Fact, or Definition?

Example 1 – English language

- a. English is the first language of approximately 1.7 billion people.
- b. English is a language belonging to the West Germanic subgroup of the Indo-European language family.
- c. English has found favor in many parents' eyes in the Asian community.

Example 2 – COVID-19

- a. Coronavirus disease 2019 (COVID-19) is an infectious disease caused by severe acute respiratory syndrome coronavirus 2 (SARS-CoV-2).
- b. COVID-19 was first identified in 2019 in Wuhan, and has since spread globally, resulting in the 2019–20 coronavirus pandemic.
- c. Since the outbreak of COVID-19, the “Western” aversion to and the Asian predilection for mask-wearing has been a recurring theme in the news.

The Outside-in Approach (Li et al., 2025)

- Place your work within a larger field to establish contextual relevance
- Then point out a knowledge gap
- Propose what you intend to do to fill the gap, along with some evidence to show its efficacy.

The Outside

Establishing Contextual
Relevance

The Threshold

Reviewing Prior Studies
Locating Gaps

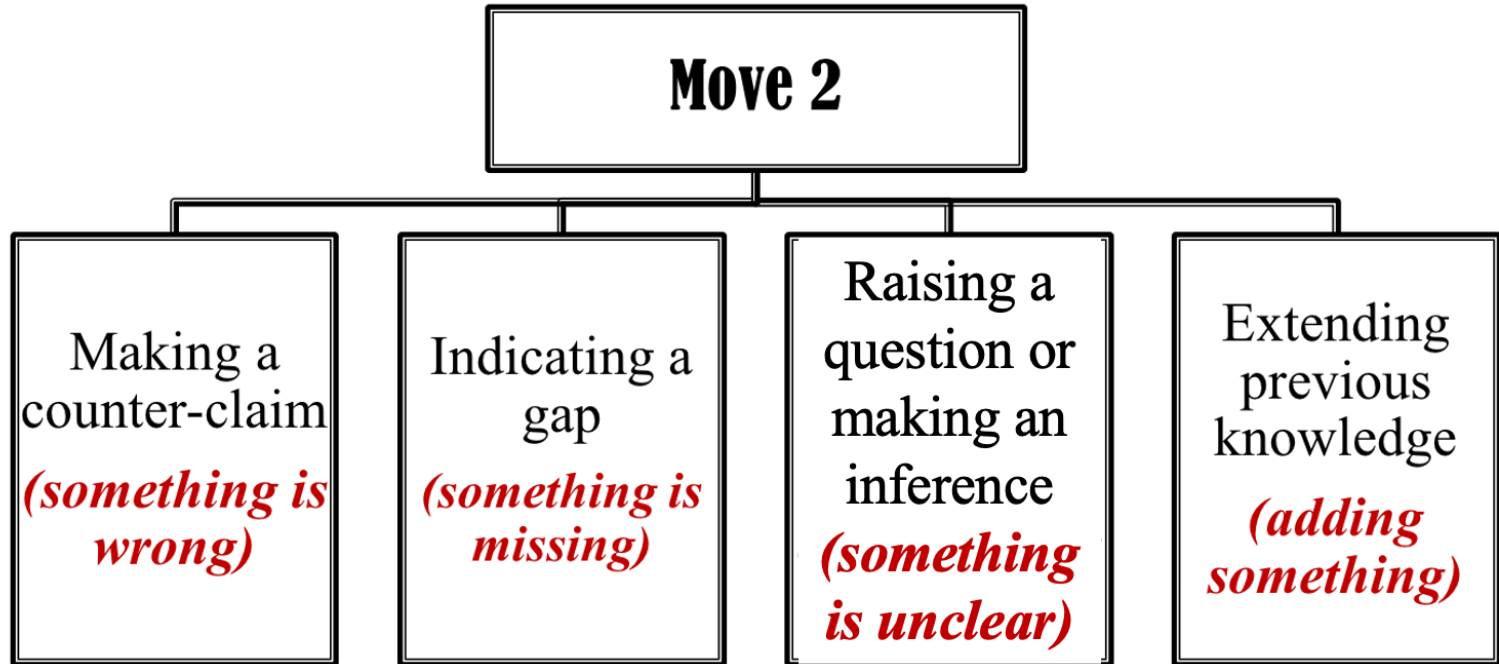
The Inside

Stating RP / Methods /
Key Results /
Organization

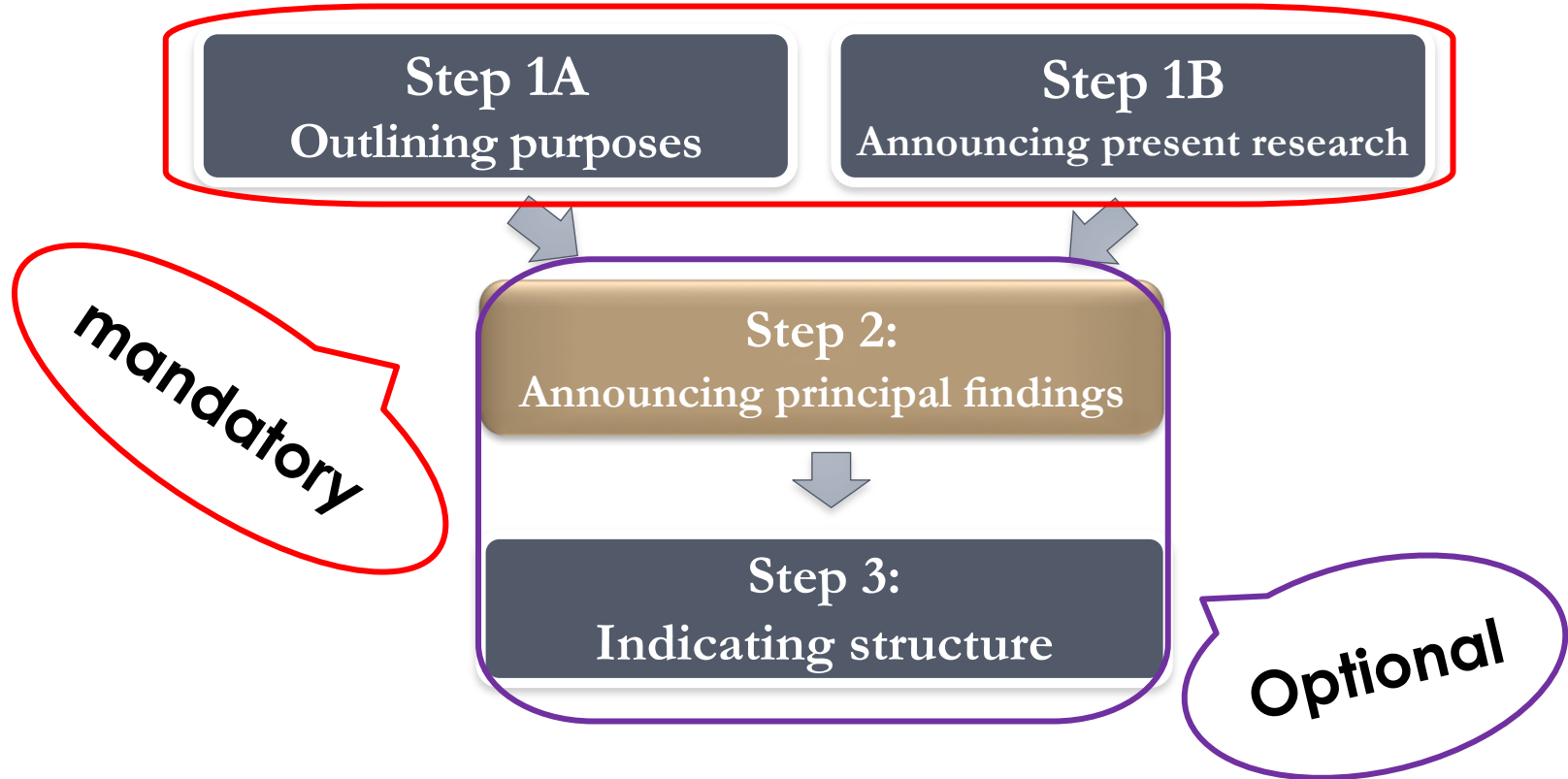
Common Language Expressions

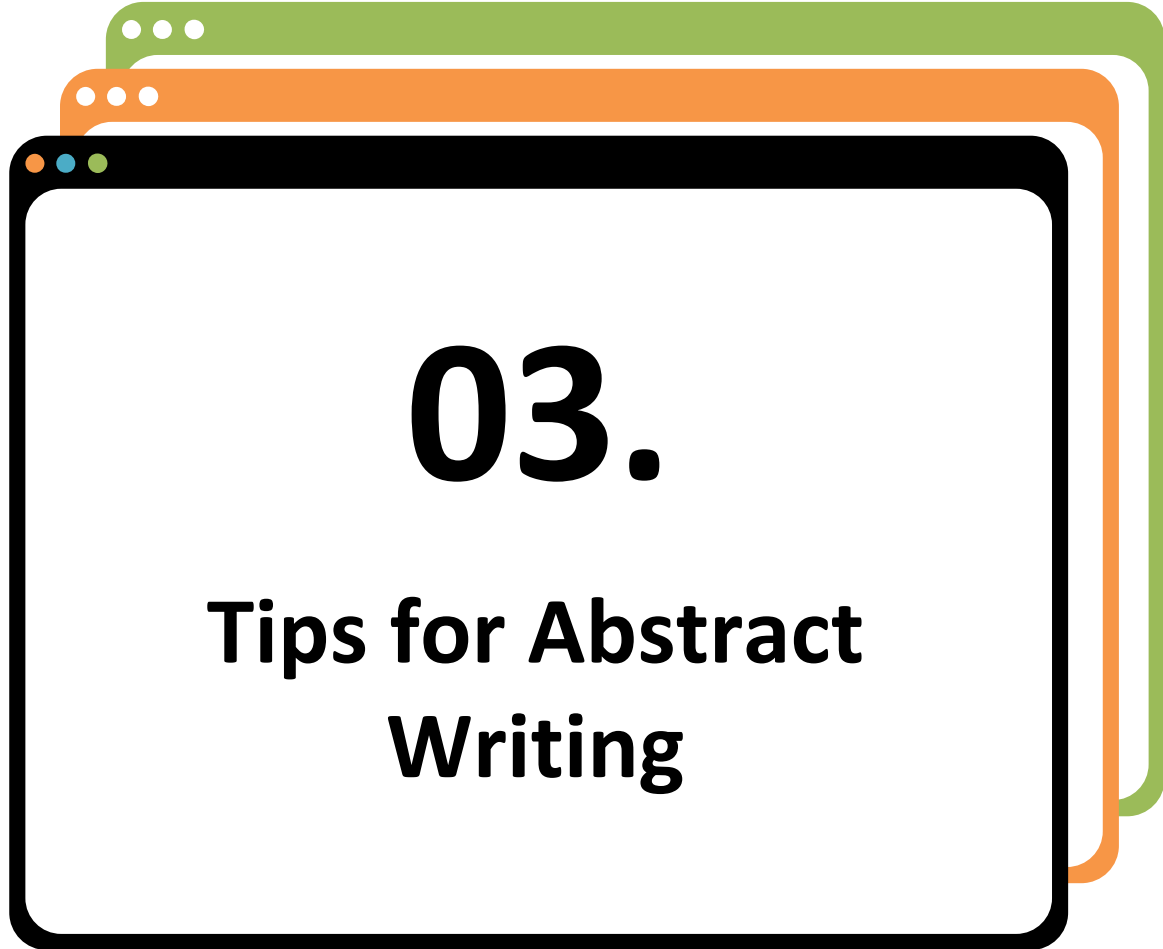
- Recently, *there has been wide research interest in* ...
- The possibility of... *has generated interest in*...
- The effect of... *has recently been the subject of* numerous studies.
- There is now *much evidence* to support the hypothesis that... (community)
- A *standard procedure for* assessing... has been... (method)
- It is commonly *suggested* that... (current status)
- The... properties of... are still *not completely* understood. (issues)

Move 2: Establishing a Niche



Move 3: Occupying the Niche





03.

**Tips for Abstract
Writing**

The Fundamental Components in a Conventional Abstract

- *Abstract.* With a listening typewriter, what an author says would be automatically recognized and displayed in front of him or her. However, speech recognition is not yet advanced enough to provide people with a reliable listening typewriter. An aim of our experiments was to determine if an imperfect listening typewriter would be useful for composing letters. Participants dictated letters, either in isolated words or in consecutive word speech. They did this with simulations of listening typewriters that recognized either a limited vocabulary (1000 or 5000 words) or an unlimited vocabulary. Results suggest that some versions, even upon first using them, were at least as good as traditional methods of handwriting and dictating. Isolated word speech with large vocabularies may provide the basis for a useful listening typewriter.

The Fundamental Components in a Conventional Abstract

- *Abstract.* With a listening typewriter, what an author says would be automatically recognized and displayed in front of him or her. However, speech recognition is not yet advanced enough to provide people with a reliable listening typewriter. An aim of our experiments was to determine if an imperfect listening typewriter would be useful for composing letters. Participants dictated letters, either in isolated words or in consecutive word speech. They did this with simulations of listening typewriters that recognized either a limited vocabulary (1000 or 5000 words) or an unlimited vocabulary. Results suggest that some versions, even upon first using them, were at least as good as traditional methods of handwriting and dictating. Isolated word speech with large vocabularies may provide the basis for a useful listening typewriter.

B

P

M

R

C

Authentic Example

Mental distress among U.S. adults during the COVID-19 pandemic by Twenge, J. M. & Joiner, T. E. (2020)

¹ The COVID-19 pandemic substantially changed daily life in ways that may impact mental health. ² This study compared a nationally representative online sample of 2,032 U.S. adults in late April 2020 to 19,330 U.S. adult internet users who participated in the 2018 National Health Interview Survey (NHIS) using the Kessler-6 scale of mental distress in the last 30 days. ³ Compared to the 2018 NHIS sample, U.S. adults in April 2020 were eight times more likely to fit criteria for serious mental distress (27.7% vs. 3.4%) and three times more likely to fit criteria for moderate or serious mental distress (70.4% vs. 22.0%). ⁴ Differences between the 2018 and 2020 sample appeared across all demographic groups, with larger differences among younger adults and those with children in the household. ⁵ Although the samples were nationally representative and demographically similar, they varied in sampling strategy and method of administration. ⁶ These considerable levels of mental distress may portend substantial increases in diagnosed mental disorders and in the morbidity and mortality associated with them.

Authentic Example

Mental distress among U.S. adults during the COVID-19 pandemic by Twenge, J. M. & Joiner, T. E. (2020)

B

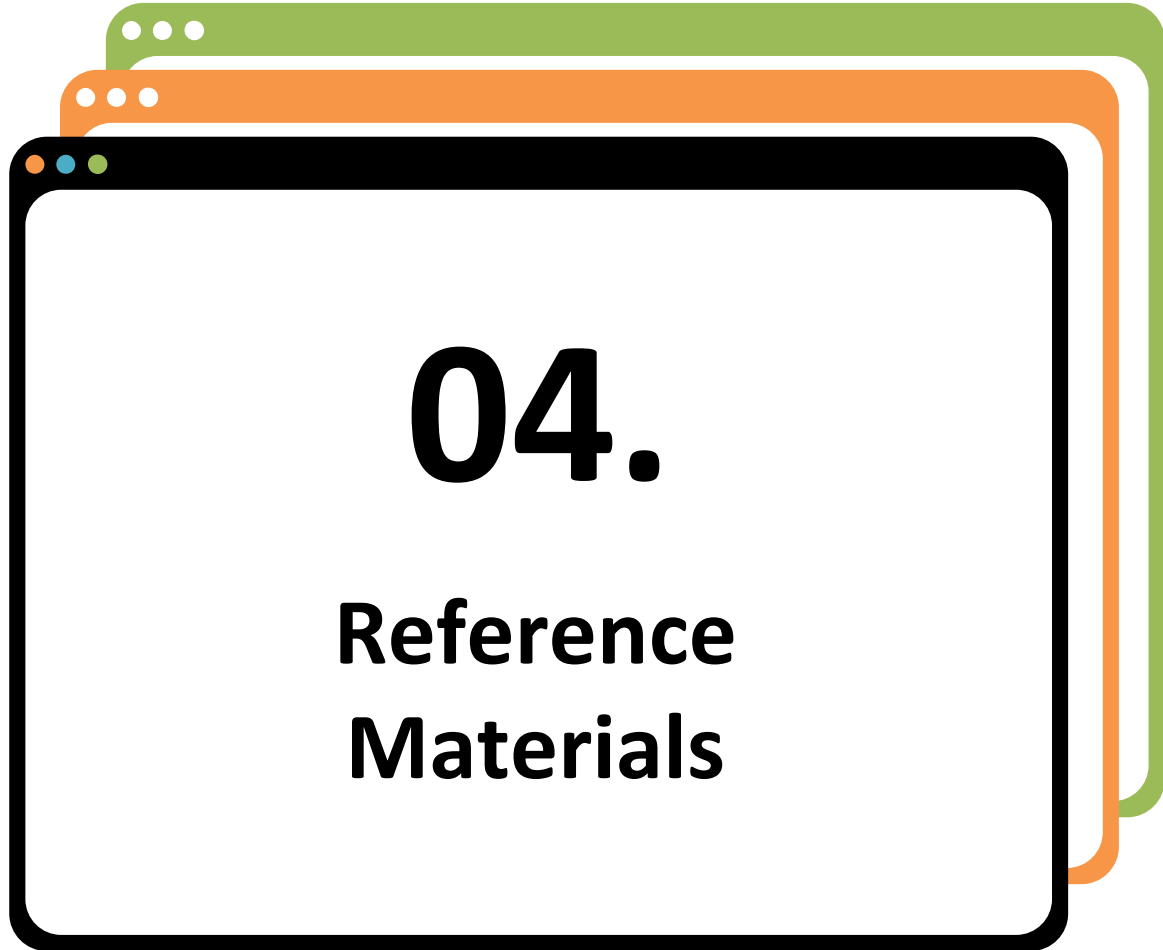
M

R

L

C

¹ The COVID-19 pandemic substantially changed daily life in ways that may impact mental health. ² This study compared a nationally representative online sample of 2,032 U.S. adults in late April 2020 to 19,330 U.S. adult internet users who participated in the 2018 National Health Interview Survey (NHIS) using the Kessler-6 scale of mental distress in the last 30 days. ³ Compared to the 2018 NHIS sample, U.S. adults in April 2020 were eight times more likely to fit criteria for serious mental distress (27.7% vs. 3.4%) and three times more likely to fit criteria for moderate or serious mental distress (70.4% vs. 22.0%). ⁴ Differences between the 2018 and 2020 sample appeared across all demographic groups, with larger differences among younger adults and those with children in the household. ⁵ Although the samples were nationally representative and demographically similar, they varied in sampling strategy and method of administration. ⁶ These considerable levels of mental distress may portend substantial increases in diagnosed mental disorders and in the morbidity and mortality associated with them.



04.

**Reference
Materials**



Strunk and White's The Element's of Style Guide

By Email Experts Pty Ltd  

Guides writers in Strunk and White's "The Elements of Style"

Improve this passage according to Strunk and...

How does Rule 14 apply to my writing?

Can you make this paragraph more concise?

What Strunk and White rule improves this...

Functions: Proofreading for Various Purposes based on the User's prompts
Features: Referring to the rules in the original book, ideal for self-study.



Writing Assistant



By Mohammed Ziara  

Edits and improves text with detailed tone analysis and explanations.

Improve and
polish this text

Fix grammar and
enhance clarity

Analyze the tone
of this writing

 Try a powerful
new GPT 

Functions: Proofreading for Various Purposes based on the User's prompts

Features: Fluent in text polishing or re-writing, always producing a thorough tone analysis

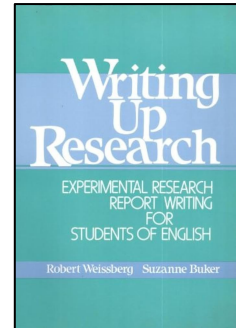
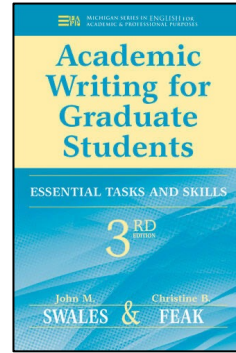
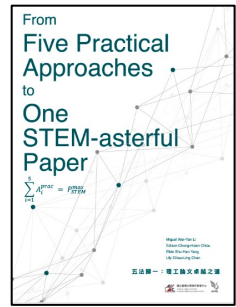
**From Five Practical Approaches to One STEM-
asterful Paper by Li, W. Y. et al.**

五法歸一：理工論文卓越之道

**Academic Writing for Graduate Students by
Swales, J. M. & Feak, C. B.**

**Writing Up Research: Experimental Research
Report Writing for Students of English by
Weissberg, R., & Buker, S.**

臺大寫作教學中心「寫作資源」：<https://awec.ntu.edu.tw/%e5%af%ab%e4%bd%9c%e8%b3%87%e6%ba%90/>



AI 助攻

論文寫作、學術溝通與
思考力再進化

4/10 學術摘要這樣寫：
中英文結構與 AI 實務應用

5/08 研究裝備升級：
期刊閱讀輔助工具實用

5/29 From Data to Discovery:
A Hands-On Introduction
to Julius AI



Key Takeaway Message

AI翻譯與編修表現 (Translation & Editing)

- ✓ 語境考量 → 釐清撰寫目的、確認讀者期待、精修指令內容

風格與「AI味」問題 (Style & Register)

- ✓ 語言趨勢 → 回歸自身語言能力考量，並持續觀察LLM表現的進化

英文學術寫作輔助 (AI-assisted Academic Writing)

- ✓ 語言門檻 → 持續培養學術英文 (EAP) 的入門寫作技巧與文章架構等概念

風險、倫理與AI素養 (Ethics, Risk & AI Literacy)

- ✓ 實務問題 → 養成良好AI倫理觀念與正確使用習慣

THANKS!

Any questions?

freddychen@ntu.edu.tw

